



File Creat Date:17/02/05 10:36:29

# GSP-6 Data Report

## Device Information

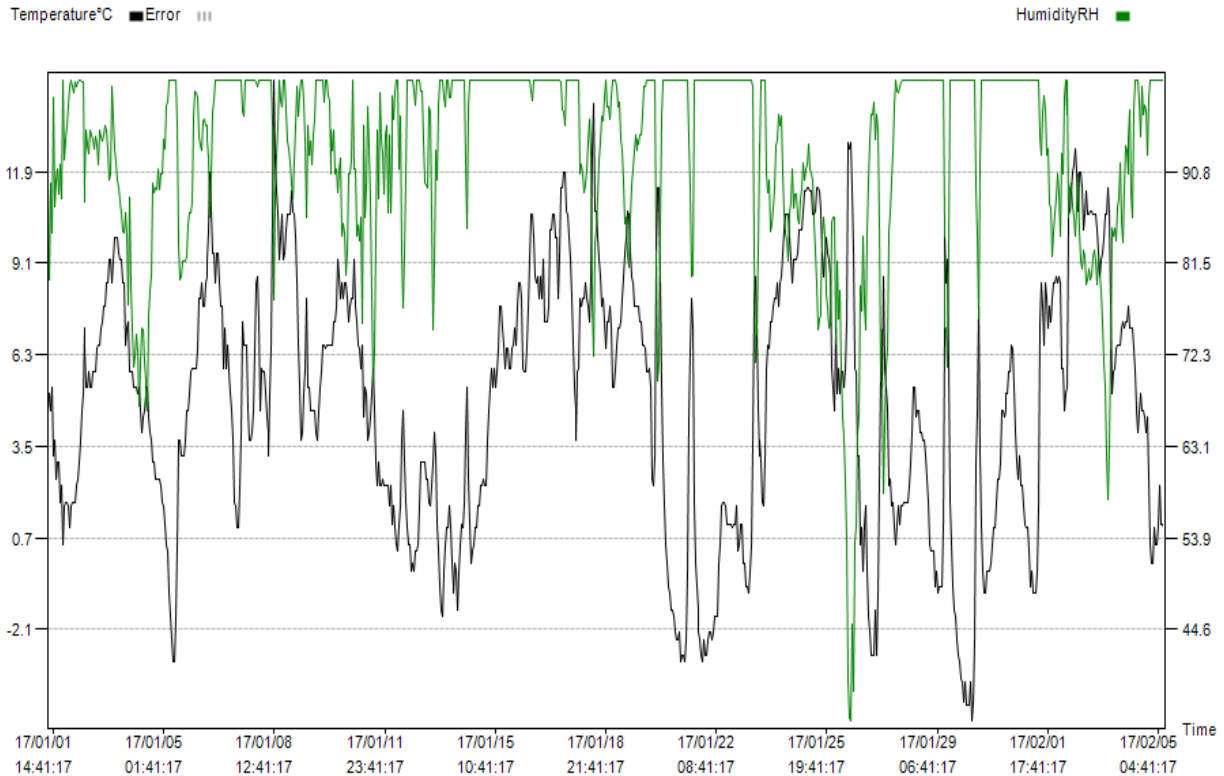
Log Interval: 1H 0M 0S	Start Delay: 0.0	Start Time: 17/01/01 10:41:17
Total Space: 16000	Stop Allow: Enable	Expected Stop Time: 18/10/30 01:41:17
Temperature Type:°C	Alarm Setting: Disable	Actual Stop Time: 17/02/05 09:41:17
Voice Set:Disable	Record Mode: Max	GSP: Disable

## Trip Information

Serial Number: 004  
 Userinfo: GSP-6 temperature & humidity Data Logger

## Logging Summary

Upper Limit: 60.0°C	Upper Limit: 90.0%RH	Recorded Count: 840
Lower Limit: -30.0°C	Lower Limit: 10.0%RH	First time: 17/01/01 10:41:17
Highest: 14.7°C	Highest: 100.0%RH	Last time: 17/02/05 09:41:17
Lowest: -4.9°C	Lowest: 35.4%RH	
Average: 4.8°C	Average: 92.8%RH	



Time	°C	RH	Time	°C	RH	Time	°C	RH	Time	°C	RH	Time	°C	RH	Time	°C	RH
17/01/01	4.6	89	14:41:17	3.2	80.2	18:41:17	4.6	96	22:41:17	1	100	02:41:17	8	90.5	06:41:17	-2.2	100
11:41:17	5.1	79.8	15:41:17	3.2	81.8	19:41:17	3.9	100	23:41:17	1.7	98.3	03:41:17	7.8	91.5	07:41:17	-1.7	100
12:41:17	4.6	89.6	16:41:17	3.2	81.7	20:41:17	3.7	100	17/01/14	1	98.3	04:41:17	8	90.5	08:41:17	-1.7	100
13:41:17	5.3	84.6	17:41:17	3.7	81.7	21:41:17	4.6	100	01:41:17	-0.1	100	05:41:17	8	88.7	09:41:17	-1.7	100
14:41:17	3.2	98.3	18:41:17	4.6	82.2	22:41:17	5.3	100	02:41:17	-0.8	100	06:41:17	8.5	89.5	10:41:17	-0.1	100
15:41:17	3.7	87.2	19:41:17	4.6	85.6	23:41:17	5.8	100	03:41:17	-1	100	07:41:17	8	91	11:41:17	0.5	100
16:41:17	2.5	90	20:41:17	5.1	86.6	17/01/10	6.6	100	04:41:17	-0.1	100	08:41:17	7.8	93.9	12:41:17	1.7	100
17:41:17	3	91.1	21:41:17	5.8	86.6	01:41:17	6.6	97.8	05:41:17	-0.3	100	09:41:17	7.3	96	13:41:17	1.8	100
18:41:17	3	88.5	22:41:17	5.9	87.7	02:41:17	6.5	100	06:41:17	-1.5	100	10:41:17	8.7	92.5	14:41:17	1.8	100
19:41:17	1.8	91.5	23:41:17	5.9	96.4	03:41:17	6.6	100	07:41:17	-0.3	100	11:41:17	12.6	77.3	15:41:17	1.7	100
20:41:17	2.3	88.1	17/01/06	5.9	98.9	04:41:17	6.6	98.4	08:41:17	0.5	100	12:41:17	14	72.1	16:41:17	1.1	100
21:41:17	0.5	100	01:41:17	5.9	98.8	05:41:17	6.6	97.9	09:41:17	1.1	100	13:41:17	10.7	83.7	17:41:17	1.1	100
22:41:17	1.7	92	02:41:17	6.5	98.3	06:41:17	6.6	90.5	10:41:17	1	100	14:41:17	10.7	85.1	18:41:17	1.1	100
23:41:17	1.8	94	03:41:17	8	94.4	07:41:17	6.6	95	11:41:17	1.8	100	15:41:17	9.9	88.2	19:41:17	1.1	100
17/01/02	1.8	95.4	04:41:17	8	93.4	08:41:17	6.6	92.9	12:41:17	3.9	91.5	16:41:17	9.2	92	20:41:17	1	100
01:41:17	1.7	97.5	05:41:17	8.5	92.9	09:41:17	7.3	95	13:41:17	5.3	85.1	17:41:17	8.7	93.9	21:41:17	1.1	100
02:41:17	1	99.4	06:41:17	7.8	95.9	10:41:17	7.3	90.6	14:41:17	2.5	97.5	18:41:17	7.8	96.4	22:41:17	1.1	100
03:41:17	1.7	100	07:41:17	7.8	96	11:41:17	7.8	91.1	15:41:17	1.1	100	19:41:17	8	95.9	23:41:17	1.7	100
04:41:17	1.8	99.3	08:41:17	8.5	95.5	12:41:17	9.2	88.7	16:41:17	-0.1	100	20:41:17	7.3	98.3	17/01/23	0.3	100
05:41:17	1.8	98.8	09:41:17	8.7	95.4	13:41:17	8.7	91	17:41:17	0.3	100	21:41:17	6.5	100	17/01/21	0.5	100
06:41:17	1.8	99.8	10:41:17	9.2	94	14:41:17	8	92.1	18:41:17	0.5	100	22:41:17	7.3	97.3	02:41:17	1.1	100
07:41:17	2.3	99.4	11:41:17	10.1	92.1	15:41:17	8.5	84.2	19:41:17	1	100	23:41:17	7.3	97.3	03:41:17	1.1	100
08:41:17	2.5	99.9	12:41:17	11.9	86.2	16:41:17	8	85.6	20:41:17	1	100	17/01/19	7.8	96	04:41:17	-0.1	100
09:41:17	3	100	13:41:17	10.7	90.5	17:41:17	8.5	84.6	21:41:17	1.7	100	01:41:17	7.1	98.4	05:41:17	-0.1	100
10:41:17	3.7	100	14:41:17	9.4	96.8	18:41:17	8.5	80.4	22:41:17	1.7	100	02:41:17	5.3	100	06:41:17	-0.8	100
11:41:17	4.6	99.9	15:41:17	9.4	97.9	19:41:17	8	82.8	23:41:17	2.3	100	03:41:17	5.3	100	07:41:17	-0.8	100
12:41:17	5.1	99.9	16:41:17	8.5	100	20:41:17	7.3	90.6	17/01/15	2.3	100	04:41:17	5.9	100	08:41:17	-1	100
13:41:17	7.1	87.7	17:41:17	9.4	100	21:41:17	7.8	90.5	01:41:17	2.5	100	05:41:17	6.6	99.4	09:41:17	-0.3	100
14:41:17	6.5	90	18:41:17	9.4	100	22:41:17	8	92	02:41:17	2.3	100	06:41:17	7.1	97.3	10:41:17	0.5	100
15:41:17	5.3	94.9	19:41:17	8.5	100	23:41:17	8	100	03:41:17	2.3	100	07:41:17	7.1	97.8	11:41:17	3.7	99.3
16:41:17	5.3	93.4	20:41:17	7.8	100	17/01/11	9.2	91	04:41:17	3.7	100	08:41:17	7.3	94	12:41:17	8	82.2
17:41:17	5.8	92.6	21:41:17	7.8	100	01:41:17	7.8	91.1	05:41:17	4.6	100	09:41:17	8	92.9	13:41:17	8.7	71.5
18:41:17	5.3	94.9	22:41:17	5.9	100	02:41:17	7.3	84.2	06:41:17	5.3	100	10:41:17	8.7	89.6	14:41:17	7.1	74.4
19:41:17	5.3	94.5	23:41:17	7.1	100	03:41:17	6.6	85.3	07:41:17	5.9	100	11:41:17	9.4	85.6	15:41:17	4.6	83.3
20:41:17	5.8	94	17/01/07	5.9	100	04:41:17	6.5	83.8	08:41:17	5.3	100	12:41:17	9.9	86.2	16:41:17	3.2	93.6
21:41:17	5.8	93.1	01:41:17	6.6	100	05:41:17	5.9	86.1	09:41:17	5.9	100	13:41:17	10.7	82.2	17:41:17	3.7	92.6
22:41:17	5.8	94.4	02:41:17	5.8	100	06:41:17	6.6	75.5	10:41:17	5.3	100	14:41:17	10.6	81.2	18:41:17	3	100
23:41:17	6.5	93.6	03:41:17	5.1	100	07:41:17	4.4	95.4	11:41:17	5.8	100	15:41:17	9.4	86.1	19:41:17	1.8	100
17/01/03	6.6	91.5	04:41:17	4.6	100	08:41:17	5.3	86.1	12:41:17	6.5	100	16:41:17	8.7	89.5	20:41:17	1.7	100
01:41:17	6.6	94.9	05:41:17	3.7	100	09:41:17	5.1	89.5	13:41:17	7.8	100	17:41:17	8.5	91	21:41:17	3.2	100
02:41:17	7.1	94.4	06:41:17	1.8	100	10:41:17	3.7	97.3	14:41:17	7.8	100	18:41:17	7.8	92.9	22:41:17	5.9	90.6
03:41:17	7.3	93.9	07:41:17	1.7	100	11:41:17	3.9	93.1	15:41:17	7.1	100	19:41:17	7.8	94.5	23:41:17	6.6	88.7
04:41:17	7.8	94.5	08:41:17	1	100	12:41:17	4.4	87.6	16:41:17	6.6	100	20:41:17	7.8	92.9	17/01/24	6.5	90
05:41:17	7.8	95.5	09:41:17	1	100	13:41:17	5.1	77.8	17:41:17	5.9	100	21:41:17	7.8	94	01:41:17	7.3	84.8
06:41:17	8.5	95	10:41:17	2.3	100	14:41:17	5.9	69.5	18:41:17	6.5	100	22:41:17	7.8	93.6	02:41:17	7.3	85.6
07:41:17	8.5	92.9	11:41:17	3.9	100	15:41:17	4.6	72.9	19:41:17	6.5	100	23:41:17	7.3	94.5	03:41:17	7.8	87.1
08:41:17	9.2	90	12:41:17	7.3	96.8	16:41:17	3	84.6	20:41:17	5.9	100	17/01/20	7.3	94.5	04:41:17	8	89.2
09:41:17	9.2	90.6	13:41:17	6.6	96.4	17:41:17	2.3	95	21:41:17	5.9	100	01:41:17	6.6	96.5	05:41:17	8	93.4
10:41:17	8.5	99.3	14:41:17	6.6	100	18:41:17	3	88.1	22:41:17	6.5	100	02:41:17	6.6	99.3	06:41:17	8.5	94
11:41:17	9.2	96	15:41:17	6.6	100	19:41:17	2.3	98.8	23:41:17	6.6	100	03:41:17	6.5	99.3	07:41:17	7.8	96.5
12:41:17	9.9	93.1	16:41:17	4.6	100	20:41:17	2.3	94	17/01/16	7.1	100	04:41:17	5.8	100	08:41:17	8.5	95.4
13:41:17	9.9	91.6	17:41:17	3.7	100	21:41:17	2.5	92.5	01:41:17	7.1	100	05:41:17	5.8	100	09:41:17	8.7	96.4
14:41:17	9.9	90	18:41:17	3.7	100	22:41:17	2.3	88.5	02:41:17	6.6	100	06:41:17	5.9	100	10:41:17	9.4	90.6
15:41:17	9.4	89.2	19:41:17	3.9	100	23:41:17	2.3	94.5	03:41:17	7.8	100	07:41:17	5.3	100	11:41:17	10.1	86.7
16:41:17	9.2	87.7	20:41:17	4.6	100	17/01/12	2.3	95.4	04:41:17	8.5	100	08:41:17	2.5	100	12:41:17	10.6	84.6
17:41:17	9.2	86.6	21:41:17	6.5	100	01:41:17	2.3	86.6	05:41:17	8.5	100	09:41:17	2.3	100	13:41:17	10.6	83.8
18:41:17	8.5	84.8	22:41:17	8.5	99.8	02:41:17	1.7	94.5	06:41:17	8	100	10:41:17	3.2	100	14:41:17	10.6	81.8
19:41:17	8.5	84.6	23:41:17	8.7	99.3	03:41:17	2.3	86.7	07:41:17	5.9	100	11:41:17	9.4	82.8	15:41:17	9.9	86.6
20:41:17	6.6	86.7	17/01/08	7.3	100	04:41:17	1.1	93.4	08:41:17	5.8	100	12:41:17	11.4	69.6	16:41:17	9.2	87.7
21:41:17	7.1	84.2	01:41:17	4.6	100	05:41:17	1.1	98.4	09:41:17	5.8	100	13:41:17	11.4	71.5	17:41:17	8.5	91
22:41:17	7.3	77.4	02:41:17	5.9	100	06:41:17	1.7	96	10:41:17	6.6	100	14:41:17	8.5	85.6	18:41:17	9.2	87.1
23:41:17	5.8	88.2	03:41:17	5.8	100	07:41:17	1	98.9	11:41:17	7.8	100	15:41:17	5.3	96.4	19:41:17	9.2	88.5
17/01/04	5.8	79.3	04:41:17	5.8	100	08:41:17	0.5	100	12:41:17	9.2	100	16:41:17	3	100	20:41:17	9.2	88.5
01:41:17	5.8	74.9	05:41:17	5.1	100	09:41:17	0.3	100	13:41:17	10.6	98.9	17:41:17	1.7	100	21:41:17	9.4	86.2
02:41:17	5.3	71.1	06:41:17	4.4	100	10:41:17	1.1	91	14:41:17	10.6	97.9	18:41:17	0.5	100	22:41:17	10.1	85.6
03:41:17	5.3	72.1	07:41:17	3.9	100	11:41:17	1.7	96.4	15:41:17	9.9	100	19:41:17	-0.1	100	23:41:17	10.1	88.1
04:41:17	5.3	74.4	08:41:17	3.2	100	12:41:17	3.7	82.2	16:41:17	8.7	100	20:41:17	-0.8	100	1		

Time	°C	RH	Time	°C	RH	Time	°C	RH	Time	°C	RH	Time	°C	RH
10:41:17	7.3	53.5	14:41:17	3.2	92	18:41:17	5.8	84.2						
11:41:17	12.8	39.4	15:41:17	1	100	19:41:17	5.9	85.1						
12:41:17	12.6	35.8	16:41:17	-0.3	100	20:41:17	6.5	83.8						
13:41:17	12.8	35.4	17:41:17	-1	100	21:41:17	6.6	87.2						
14:41:17	11.3	45.1	18:41:17	-1	100	22:41:17	6.6	88.1						
15:41:17	9.4	38.4	19:41:17	-0.3	100	23:41:17	6.6	91.6						
16:41:17	5.9	53.5	20:41:17	-0.3	100	17/02/04	7.1	85.7						
17:41:17	5.8	55	21:41:17	-0.3	100	01:41:17	7.3	83.7						
18:41:17	3.2	64.3	22:41:17	-0.1	100	02:41:17	7.1	89.2						
19:41:17	3.2	66.1	23:41:17	0.5	100	03:41:17	7.3	93.4						
20:41:17	0.5	79.3	17/01/31	1	100	04:41:17	7.3	92.9						
21:41:17	1	76.8	01:41:17	1	100	05:41:17	7.8	90.5						
22:41:17	-0.3	84.2	02:41:17	1.8	100	06:41:17	7.8	94.4						
23:41:17	1.1	77.4	03:41:17	2.5	100	07:41:17	7.1	97						
17/01/27	1.7	74.9	04:41:17	2.5	100	08:41:17	7.1	88.5						
01:41:17	-0.3	84.8	05:41:17	3	100	09:41:17	7.1	86.1						
02:41:17	-1.7	90	06:41:17	4.6	100	10:41:17	6.5	97						
03:41:17	-2.2	94	07:41:17	4.6	100	11:41:17	5.8	100						
04:41:17	-2.9	96.5	08:41:17	4.4	100	12:41:17	4.6	100						
05:41:17	-2.9	96.5	09:41:17	4.6	100	13:41:17	3.9	100						
06:41:17	-2.9	97.8	10:41:17	5.1	100	14:41:17	4.6	97.8						
07:41:17	-1.5	94	11:41:17	5.1	100	15:41:17	5.1	94.4						
08:41:17	-2.9	96.5	12:41:17	5.8	100	16:41:17	4.6	99.4						
09:41:17	-1	95	13:41:17	5.8	100	17:41:17	4.6	96.5						
10:41:17	2.5	85.1	14:41:17	6.6	100	18:41:17	4.4	97.5						
11:41:17	5.8	69.6	15:41:17	6.5	100	19:41:17	3.9	97						
12:41:17	5.3	74.9	16:41:17	5.3	100	20:41:17	4.4	92.5						
13:41:17	5.3	69.6	17:41:17	3.9	100	21:41:17	2.5	98.3						
14:41:17	8.7	58.3	18:41:17	3	100	22:41:17	0.5	100						
15:41:17	5.9	65.2	19:41:17	2.5	100	23:41:17	-0.1	100						
16:41:17	5.3	71.1	20:41:17	3.2	100	17/02/05	-0.1	100						
17:41:17	4.6	73	21:41:17	2.3	100	01:41:17	1	100						
18:41:17	2.3	84.8	22:41:17	2.3	100	02:41:17	0.5	100						
19:41:17	2.5	86.6	23:41:17	1.7	100	03:41:17	0.5	100						
20:41:17	1.7	90	17/02/01	1.1	100	04:41:17	1.1	100						
21:41:17	1.8	92.9	01:41:17	1	100	05:41:17	2.3	100						
22:41:17	1	97.5	02:41:17	1	100	06:41:17	1.1	100						
23:41:17	0.5	100	03:41:17	0.3	100	07:41:17	1.1	100						
17/01/28	1.1	98.9	04:41:17	-0.8	100	08:41:17	1	100						
01:41:17	1.7	98.8	05:41:17	-0.3	100	09:41:17	2.3	100						
02:41:17	1.1	99.4	06:41:17	-1	100									
03:41:17	1.7	99.8	07:41:17	-1	100									
04:41:17	1.7	100	08:41:17	-1	100									
05:41:17	1.8	100	09:41:17	-0.3	100									
06:41:17	1.8	100	10:41:17	1.7	100									
07:41:17	1.8	100	11:41:17	7.3	94.4									
08:41:17	1.8	100	12:41:17	8.5	92.5									
09:41:17	2.3	100	13:41:17	7.8	96.8									
10:41:17	3	100	14:41:17	6.6	98.4									
11:41:17	3.9	100	15:41:17	8.5	97									
12:41:17	5.3	100	16:41:17	8	92.5									
13:41:17	5.3	100	17:41:17	7.1	93.1									
14:41:17	4.4	100	18:41:17	7.8	87.6									
15:41:17	4.6	100	19:41:17	7.3	87.1									
16:41:17	4.6	100	20:41:17	8	82.2									
17:41:17	3.9	100	21:41:17	8.5	84.8									
18:41:17	3.9	100	22:41:17	8.5	86.6									
19:41:17	3.7	100	23:41:17	8.7	88.2									
20:41:17	3.7	100	17/02/02	8.5	90.6									
21:41:17	3.2	100	01:41:17	8.7	88.5									
22:41:17	2.5	100	02:41:17	8.5	84.2									
23:41:17	1.8	100	03:41:17	5.9	92.6									
17/01/29	0.5	100	04:41:17	5.9	90.5									
01:41:17	0.3	100	05:41:17	4.6	98.4									
02:41:17	0.3	100	06:41:17	5.1	100									
03:41:17	0.3	100	07:41:17	5.3	96.5									
04:41:17	-0.8	100	08:41:17	5.3	100									
05:41:17	-0.3	100	09:41:17	10.6	86.2									
06:41:17	-1	100	10:41:17	10.7	89.2									
07:41:17	-0.8	100	11:41:17	11.3	89.6									
08:41:17	-0.8	100	12:41:17	11.9	87.2									
09:41:17	-0.8	100	13:41:17	12.1	86.1									
10:41:17	1.1	100	14:41:17	12.6	84.2									
11:41:17	7.3	84.6	15:41:17	11.9	87.2									
12:41:17	9.9	75	16:41:17	10.7	90.5									
13:41:17	8.5	75	17:41:17	11.9	84.8									
14:41:17	9.2	71.1	18:41:17	11.9	81.8									
15:41:17	5.9	83.8	19:41:17	11.4	80.9									
16:41:17	1.8	100	20:41:17	10.1	82.8									
17:41:17	0.5	100	21:41:17	10.6	82.2									
18:41:17	-0.8	100	22:41:17	11.3	79.4									
19:41:17	-1.5	100	23:41:17	10.6	79.8									
20:41:17	-1.7	100	17/02/03	10.6	80.9									
21:41:17	-2.4	100	01:41:17	10.7	79.8									
22:41:17	-2.9	100	02:41:17	10.7	80.4									
23:41:17	-3.1	100	03:41:17	10.6	82.2									
17/01/30	-3.6	100	04:41:17	10.6	82.8									
01:41:17	-3.7	100	05:41:17	10.6	81.7									
02:41:17	-4.3	100	06:41:17	10.1	79.4									
03:41:17	-3.7	100	07:41:17	9.4	82.2									
04:41:17	-4.4	100	08:41:17	8.7	80.4									
05:41:17	-4.4	100	09:41:17	9.2	78.8									
06:41:17	-4.4	100	10:41:17	9.4	75.4									
07:41:17	-3.7	100	11:41:17	9.9	71.5									
08:41:17	-4.9	100	12:41:17	10.6	69									
09:41:17	-4.3	100	13:41:17	10.6	62.2									
10:41:17	-2.4	100	14:41:17	11.4	57.8									
11:41:17	3	89	15:41:17	10.6	63.3									
12:41:17	4.6	84.2	16:41:17	7.8	72.9									
13:41:17	7.8	75.9	17:41:17	5.1	85.1									